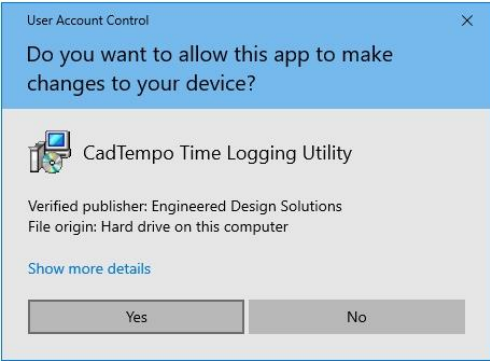


CadTempo Multiple User Installation Guide

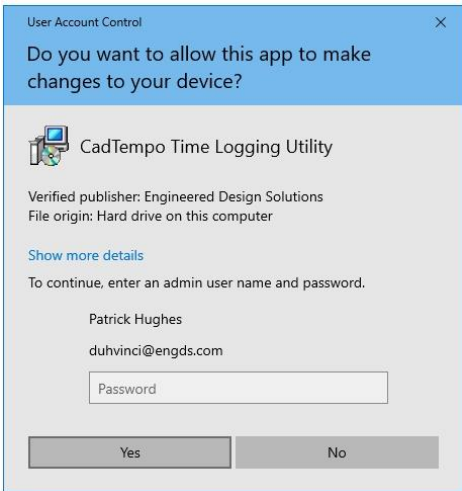
It is recommended to install from the main user's computer

Administrator



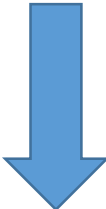
This dialog appears when you are normally logged on as an Administrator. You can proceed with your installation.

Standard User



This dialog appears when you are logged on as a standard user with limited account privileges. **Do not start the installer "Run as administrator"**.

The reason for this is certain support files will be placed in the Administrator's local folder and will prevent proper functioning.



Are you updating a current installation?

No

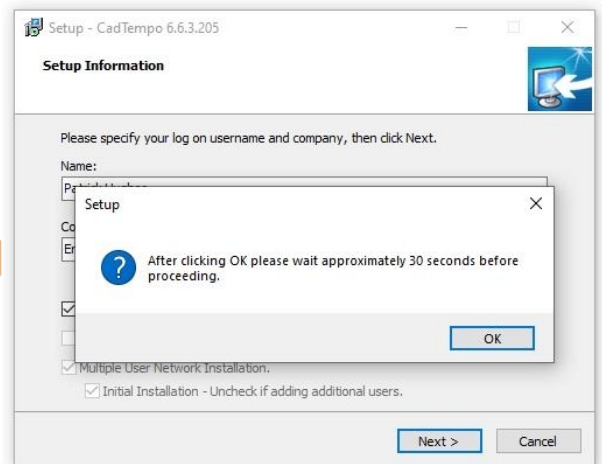
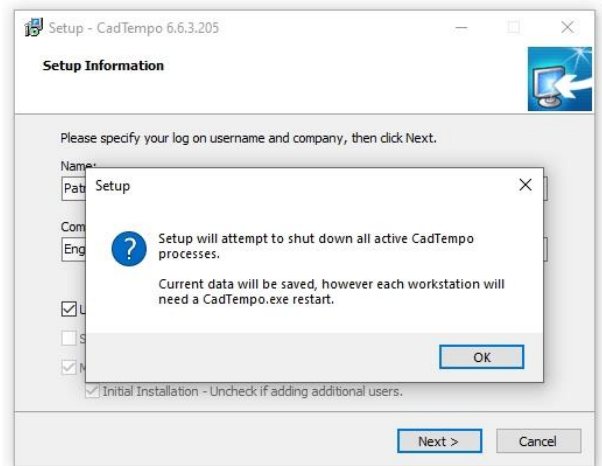
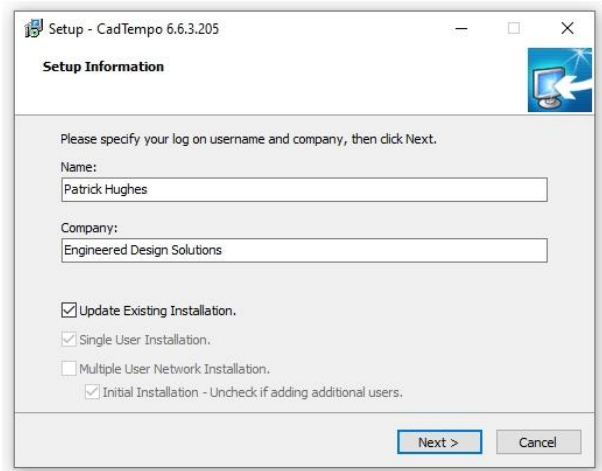
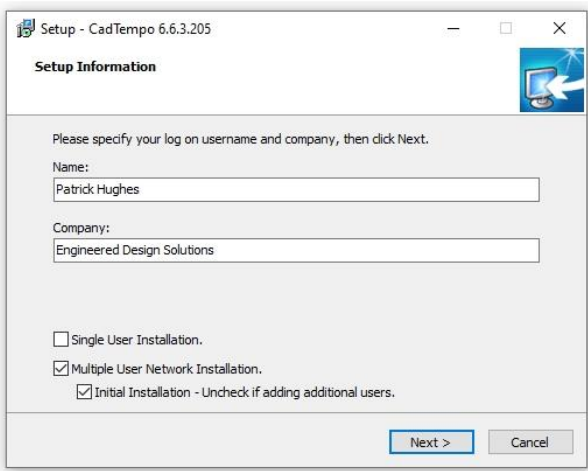


Yes



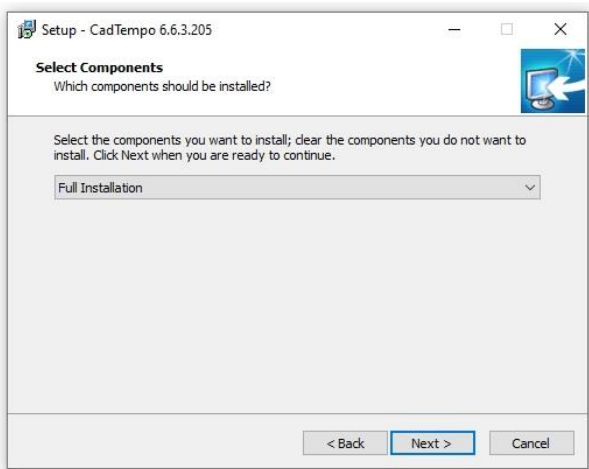
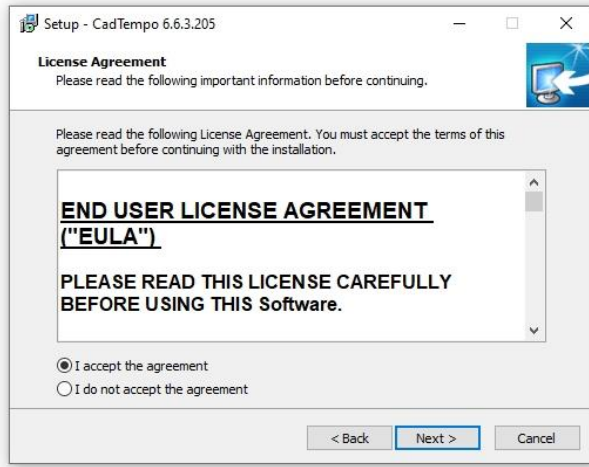
You must install from the original computer so the installer can find the correct information from the registry.

You do not need to perform multiple updates.

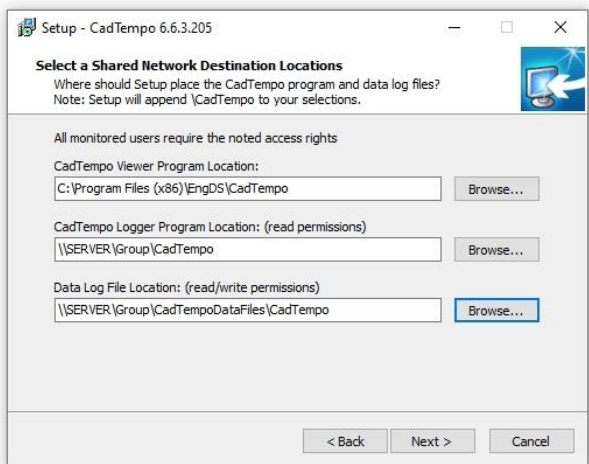


If the installer is unable to shut down all instances of CadTempo.exe an error is likely to occur in the installer and may require manual shutdown on each user's computer.

To ensure capture of logged data you can start CadTempo.exe on the offending computers with the "q" parameter. (e.g. run cadtempo q). This will save the current logged data and exit the program.



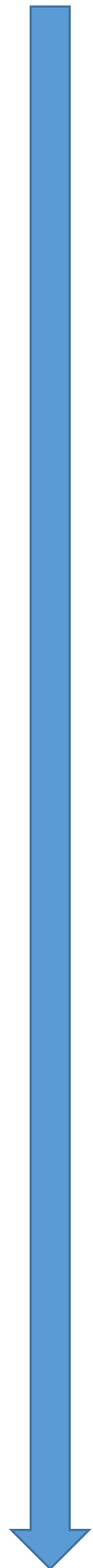
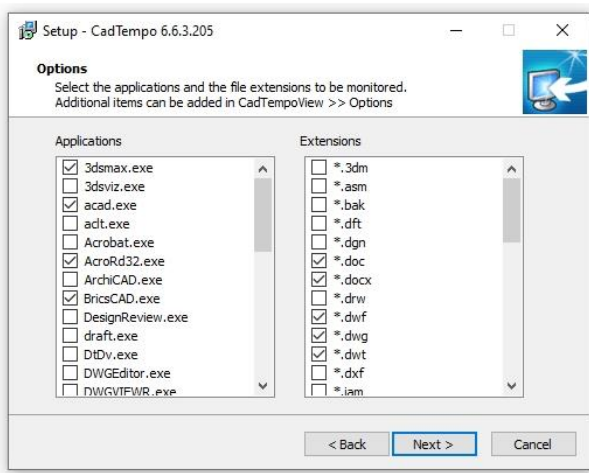
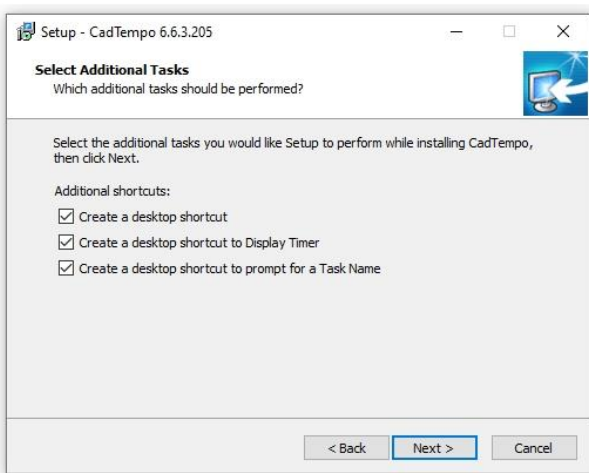
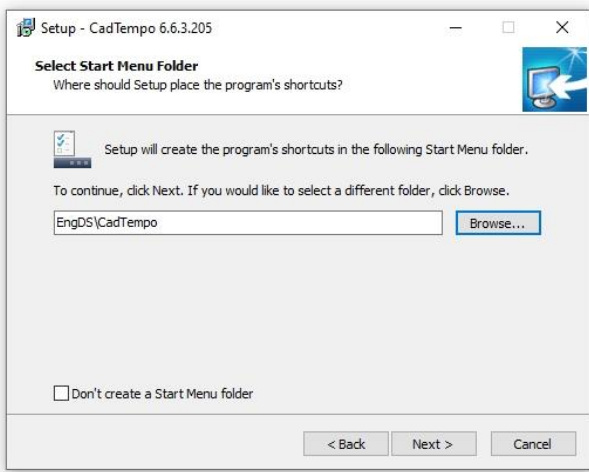
Your other choices are:
Viewer Installation (for management)
Or
Logger Installation (for CAD users)

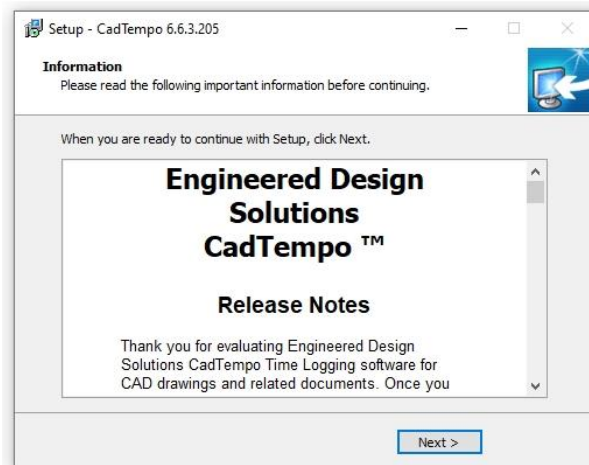
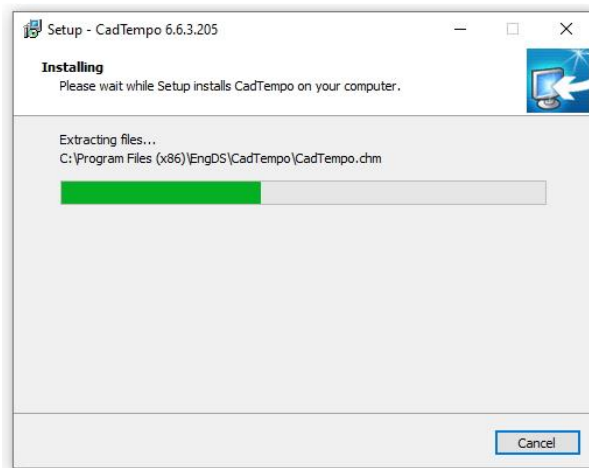
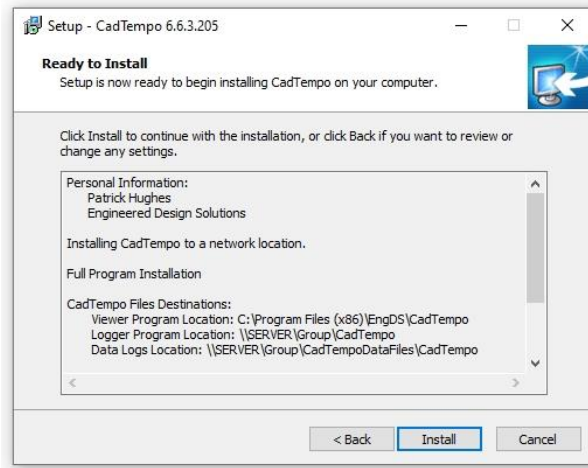


Viewer Location – If installing for a single viewer user, the local drive is acceptable. If installing multiple viewer users browse to a network location. Then on additional viewer installations browse to and select the original “CadTempoView.exe” file from the network location.

Logger location – Browse for a network location. Then on additional installations browse to and select the original “CadTempo.exe” file from the network location. (e.g. \\ServerName\ProgramFolder...)

Data Log File Location - Browse for a network location. (e.g. \\ServerName\DataFolder...)







You might consider delaying starting the Logging program if you will be adding more users. This will avoid the need for the installer terminating currently running CadTempo.exe instances

Note: The CadTempo Viewer program will not be populated with logged data until some time has been accumulated by the logger.

To best evaluate the program, after starting the logger and working in your monitored programs for a while, close all applications you have selected to monitor. You will then see time logged in the Session window of the Viewer.

Or

If you selected to create a desktop shortcut to the Display Timer, double click the icon to observe the operation of the logger while working in a monitored program.