

CadTempo Single User Install



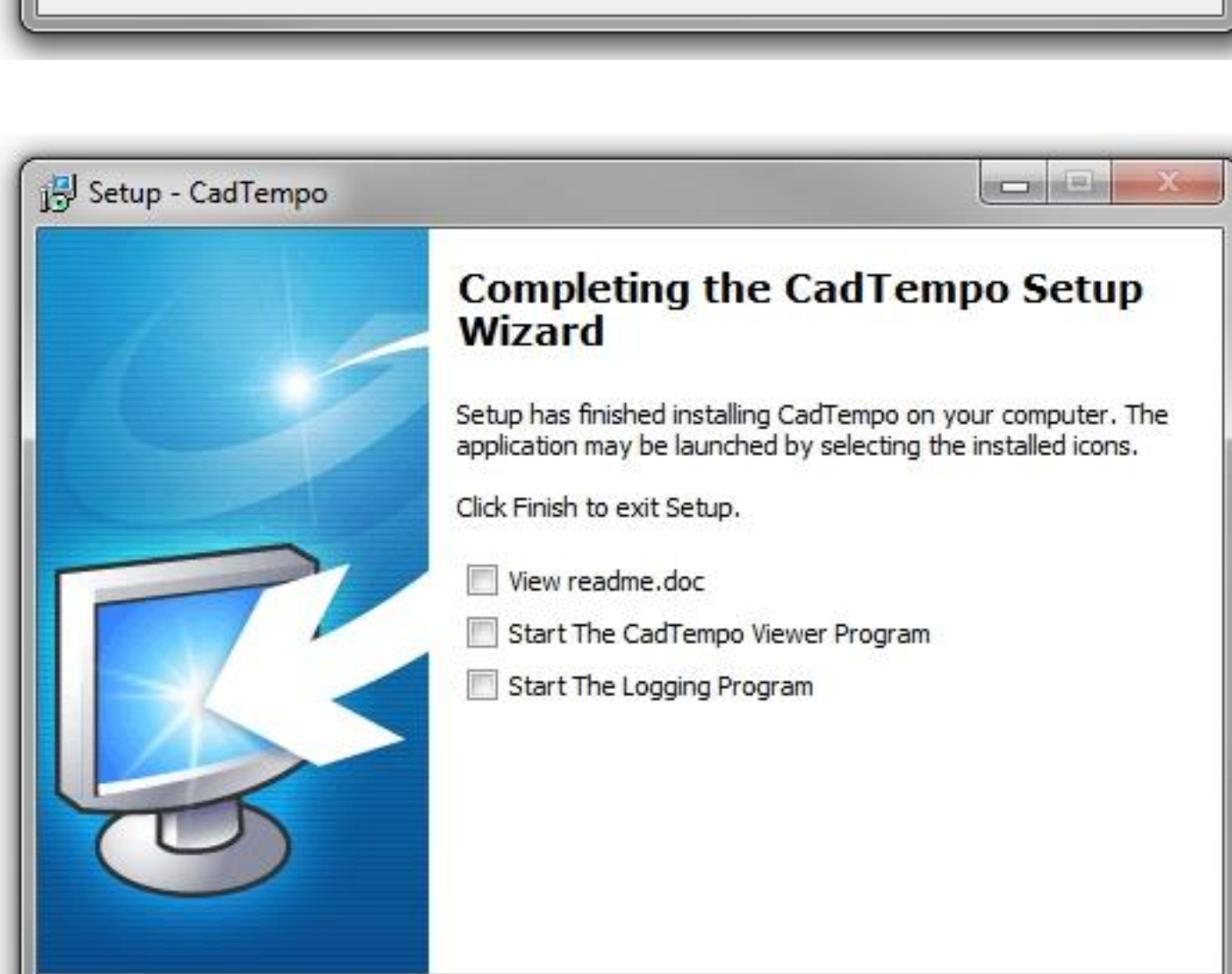
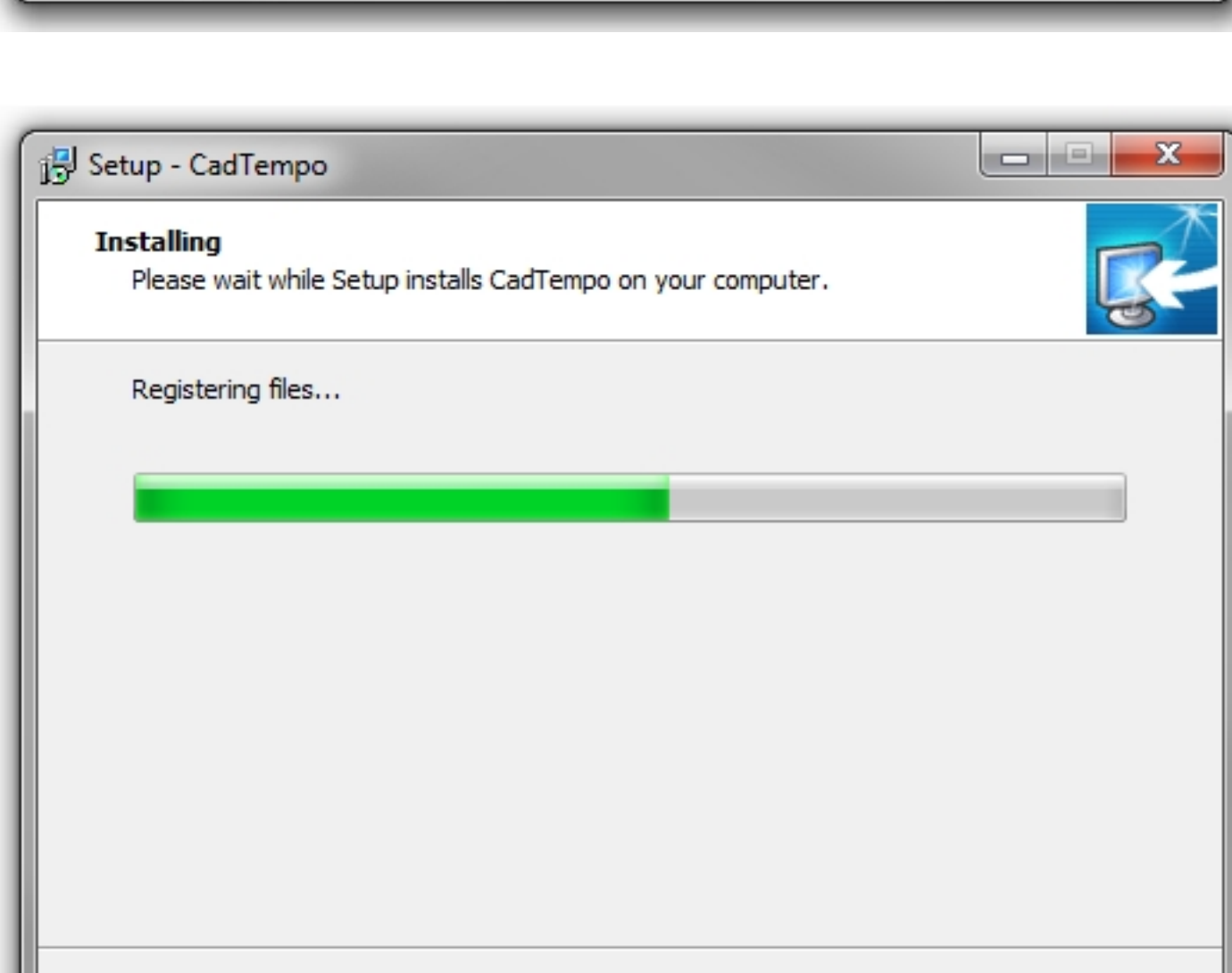
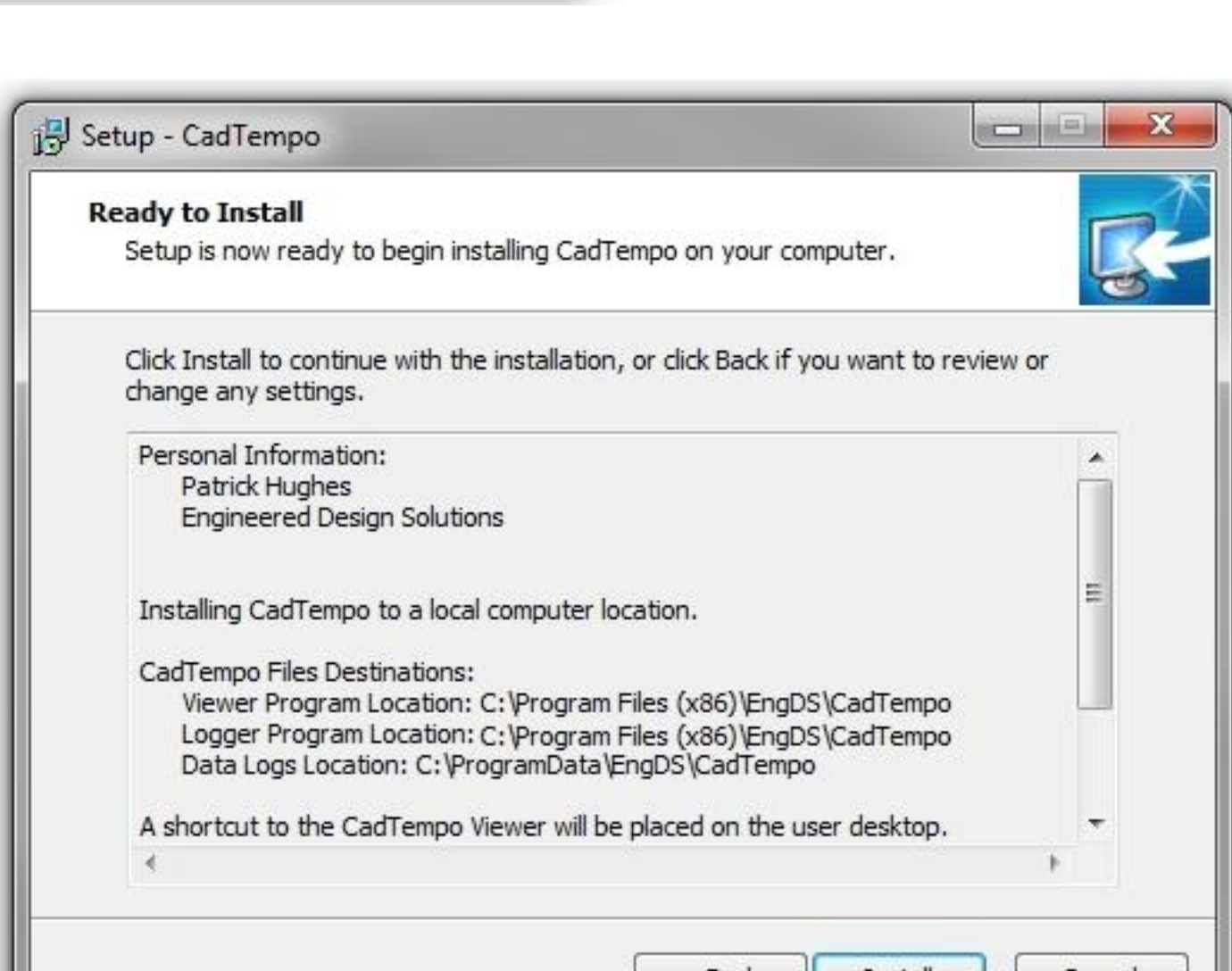
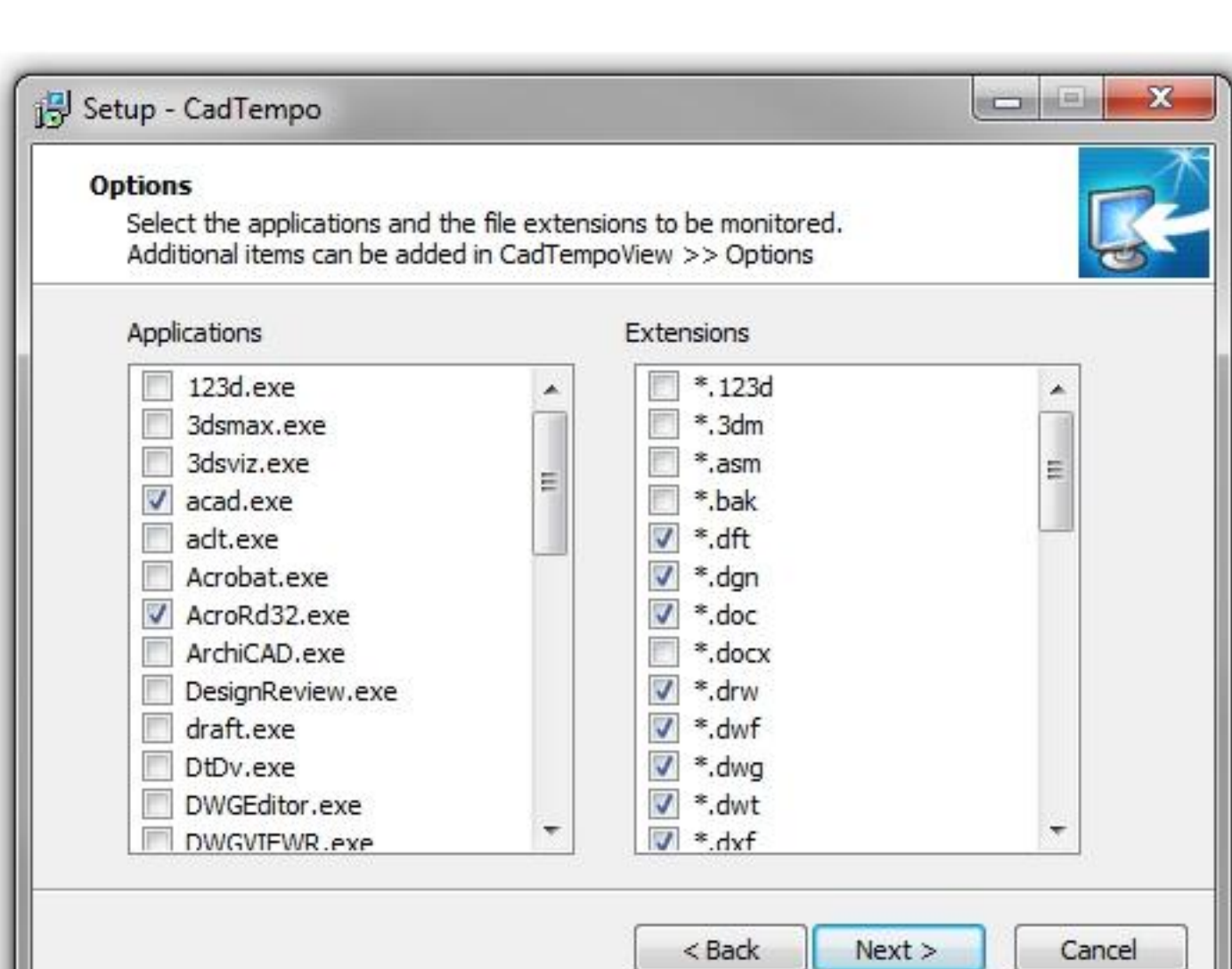
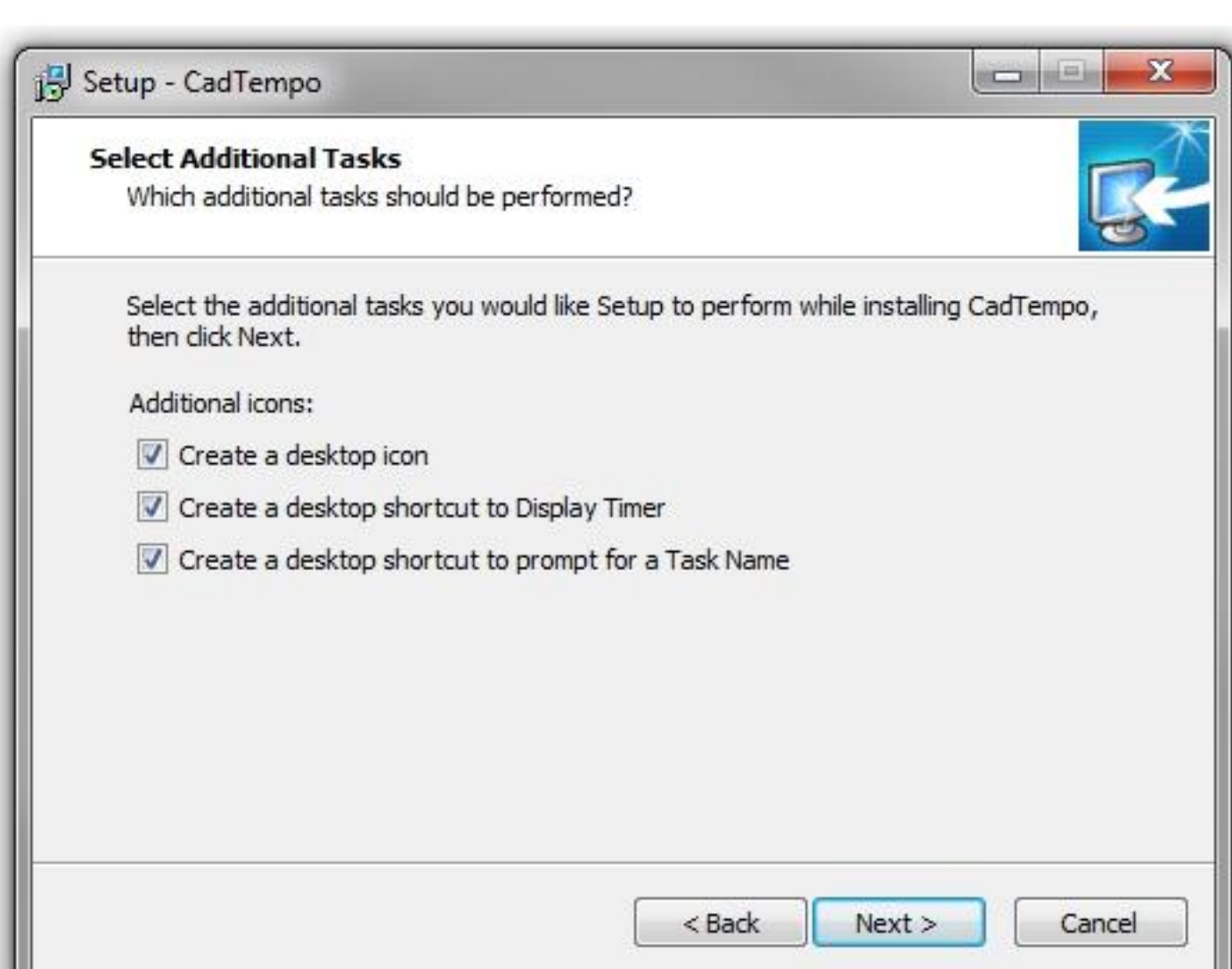
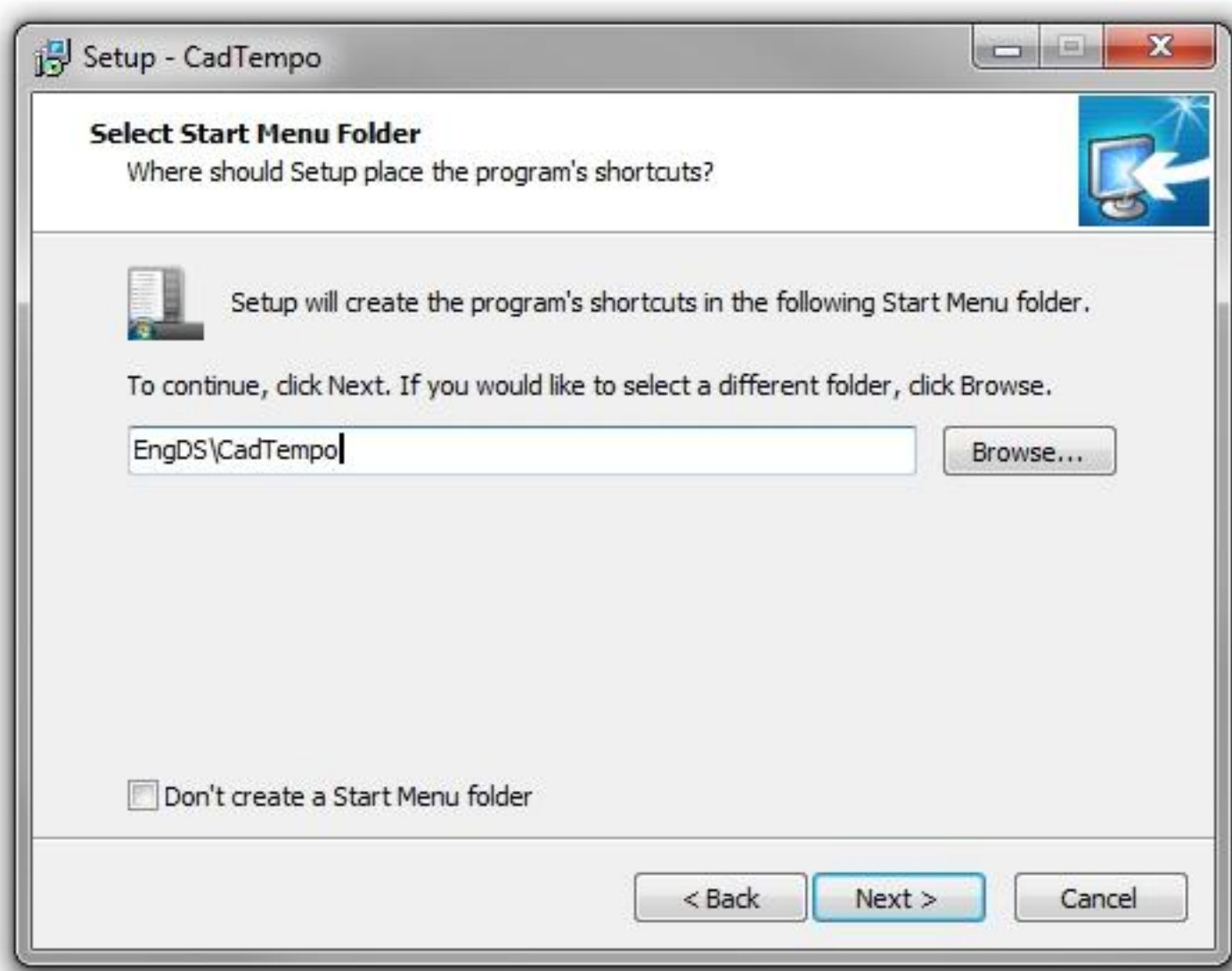
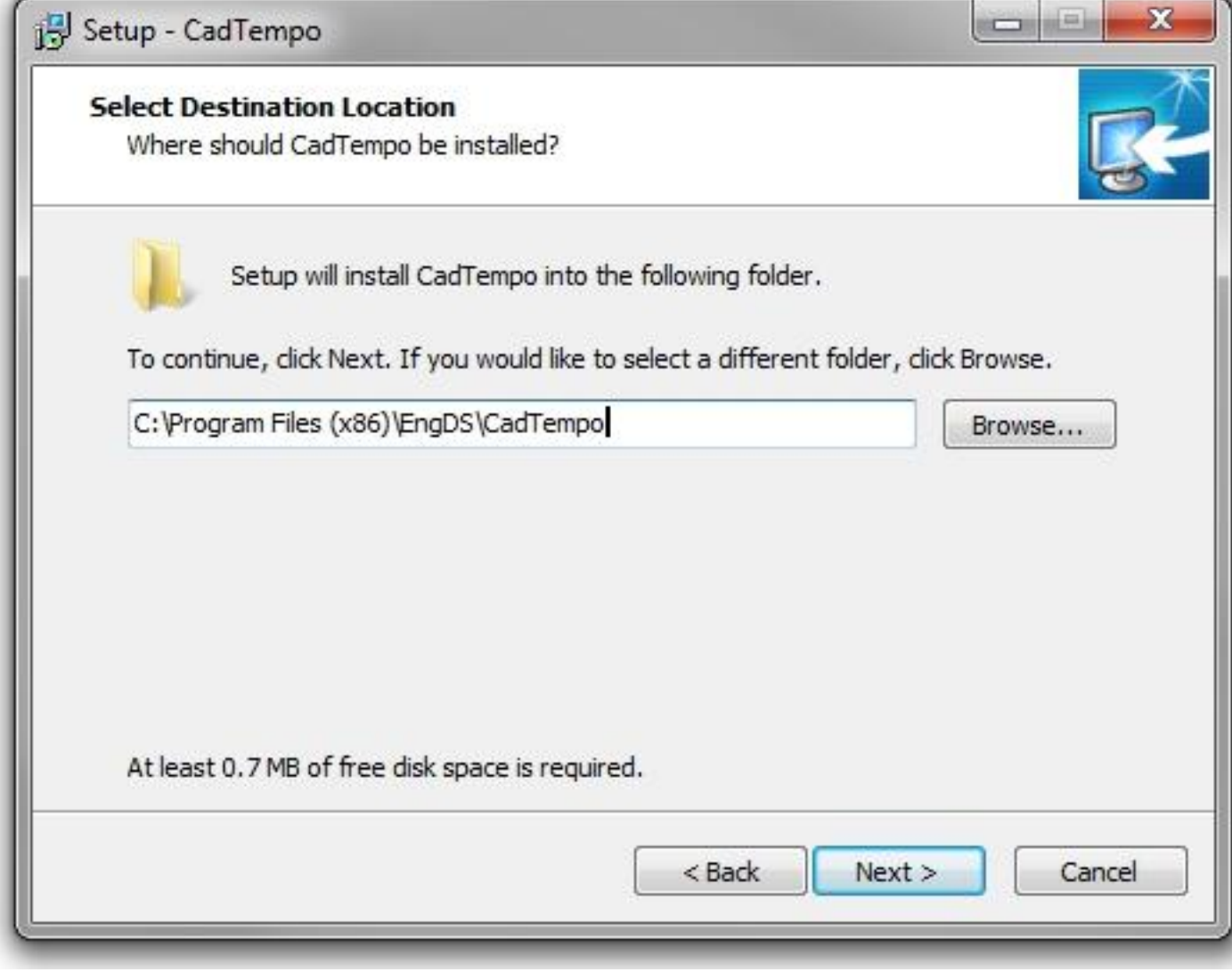
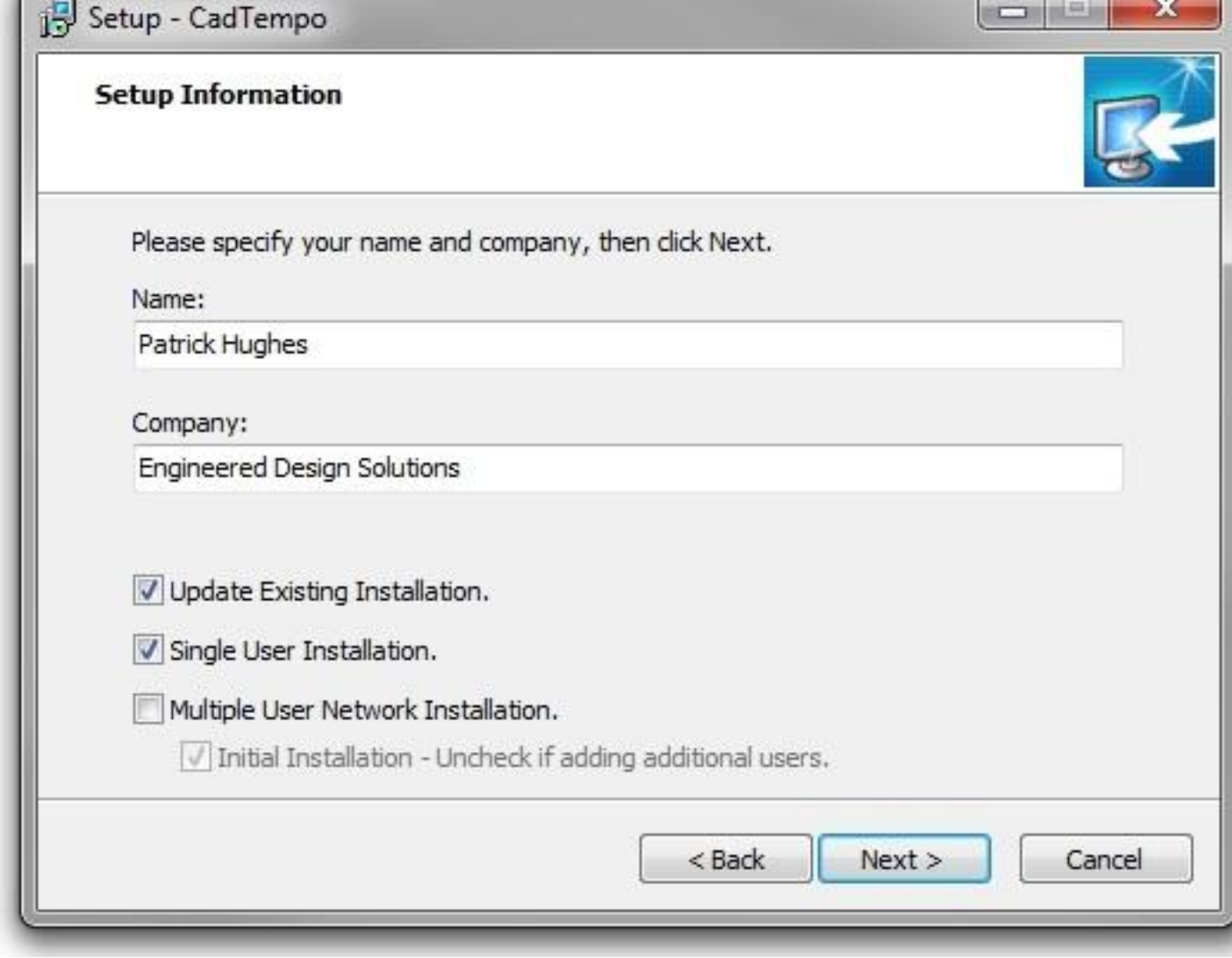
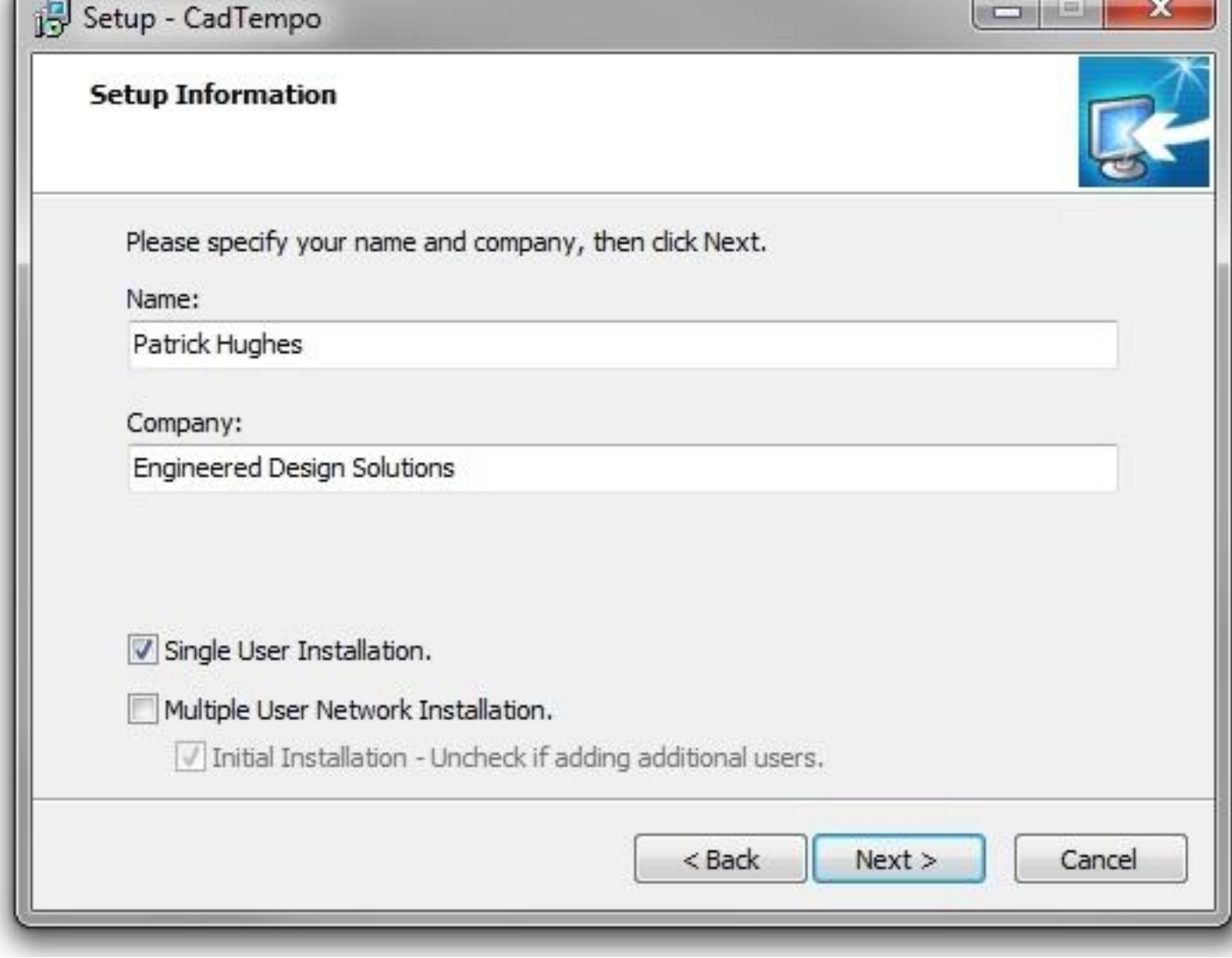
Begin as logged on user -Windows will prompt you for elevation if needed.



Are you Updating a current installation?

No

Yes



Please note - The CadTempo Viewer Program will not be populated with logged data until some time has been accumulated by the logger.

To best evaluate the program, after starting the logger close all applications that you have selected to monitor.

You will then see time logged in the Session window of the viewer.